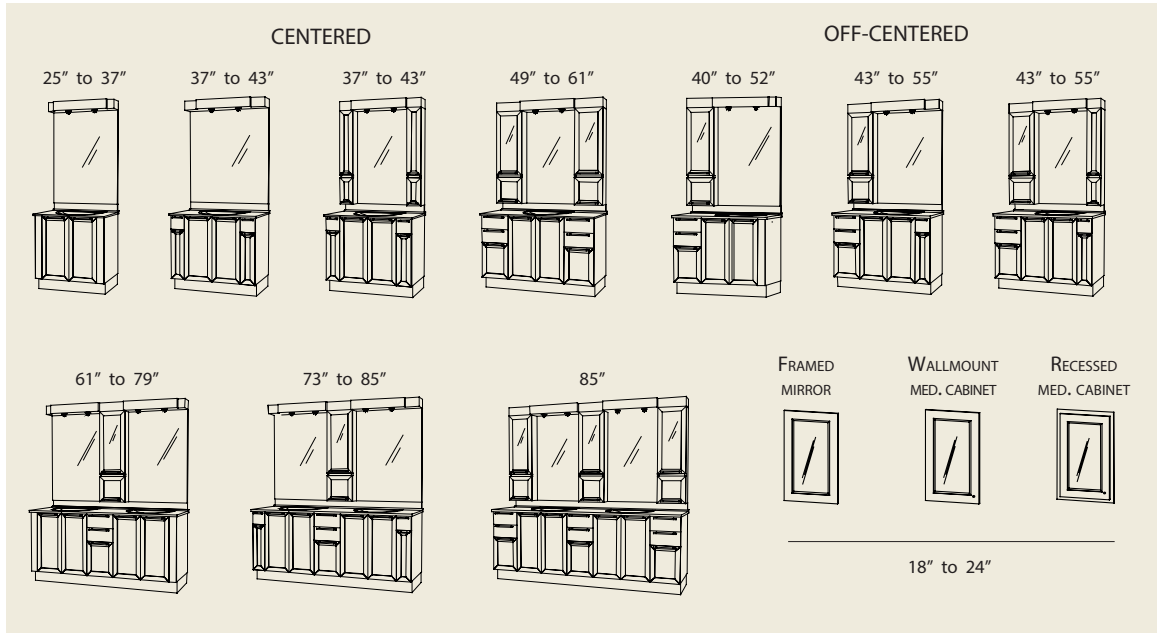


SCANDIA | SELECTION

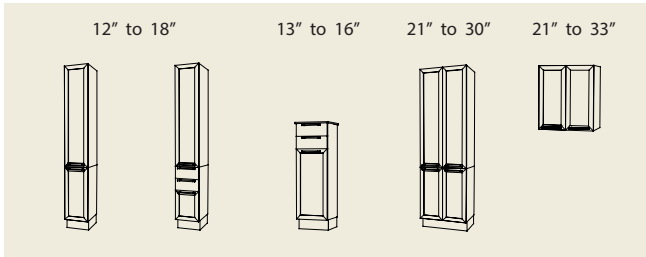
LAYOUTS AND COMPOSITION

STANDARD LAYOUTS

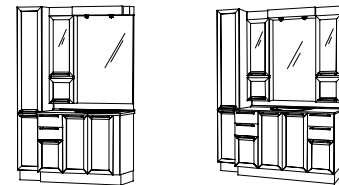
Note: Sink bases and medicine cabinets are available separately



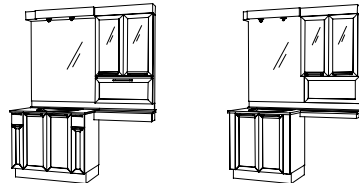
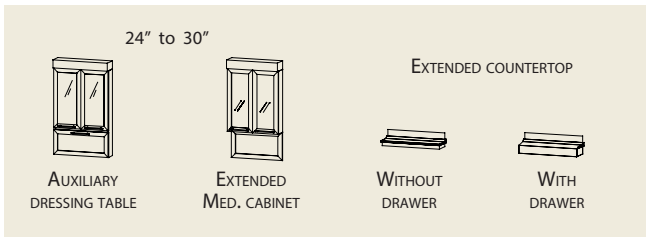
+ LINEN CABINETS



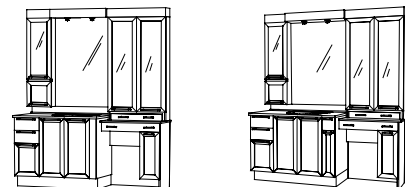
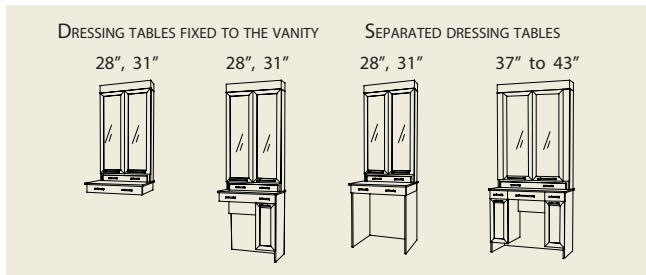
LAYOUT EXAMPLES



+ OVER THE TOILET CABINETS

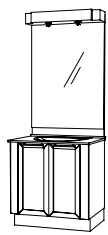


+ DRESSING TABLES

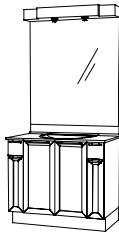


SCANDIA | SELECTION

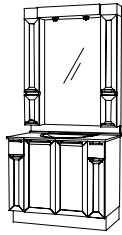
SUGGESTED LAYOUTS



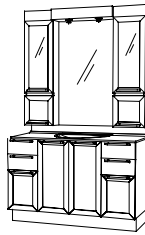
25" to 37"



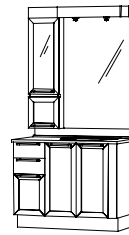
37" to 43"



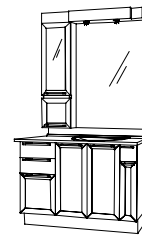
37" to 43"



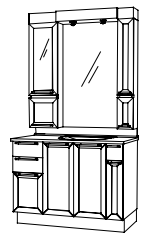
49" to 61"



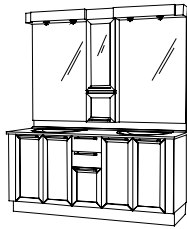
40" to 52"



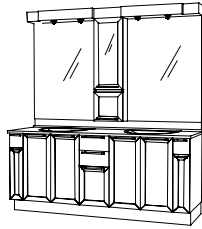
43" to 55"



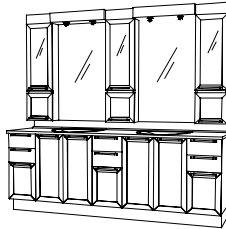
43" to 55"



61" to 79"



73" to 85"



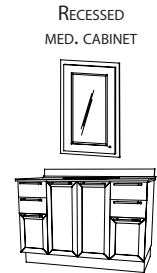
85"



MIRROR WITH
FRAME

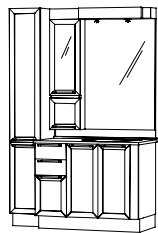


WALLMOUNT
MED. CABINET

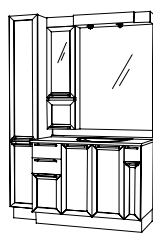


RECESSED
MED. CABINET

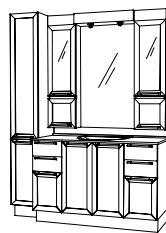
LAYOUTS WITH LINEN CABINET



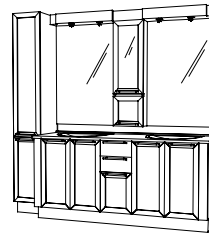
52" to 67"



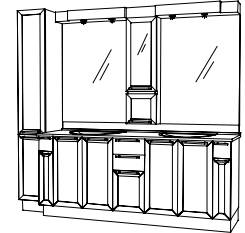
55" to 67"



61" to 76"

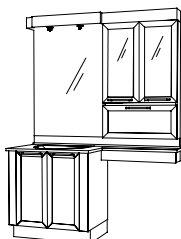


73" to 97"



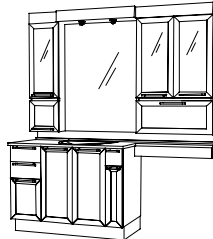
85" to 103"

LAYOUTS WITH OVER THE TOILET CABINET



55" to 67"

AUXILIARY
DRESSING
TABLE



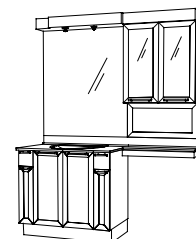
67" to 85"

AUXILIARY
DRESSING
TABLE



67" to 79"

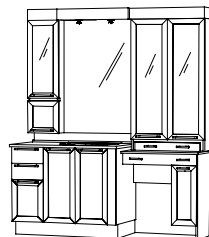
AUXILIARY
DRESSING
TABLE



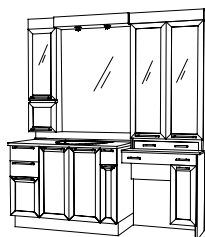
61" to 73"

EXTENDED
MEDICINE
CABINET

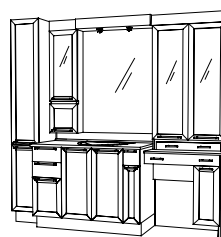
LAYOUTS WITH DRESSING TABLE



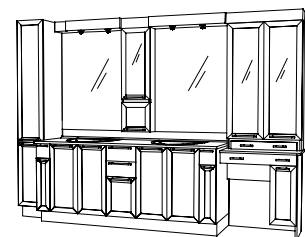
67" to 76"



73" to 82"



82" to 97"



112" to 127"