



**FB040B00** inches 66 x 30 x 23 mm 1675 x 762 x 584

# BOX

**INNER SIZE** in 56 1/2 x 24 1/2 x 18 3/4  
mm 1435 x 647 x 476

**WALL THICKNESS** 1"/25 mm

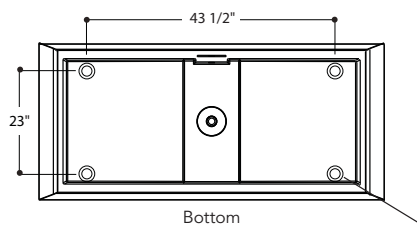
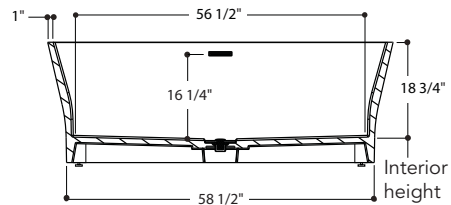
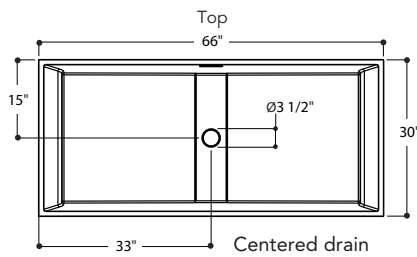
**MATERIAL** UNIMAR 3.0 white U-00

**WATER CAPACITY** 90 gal/340 L including one person

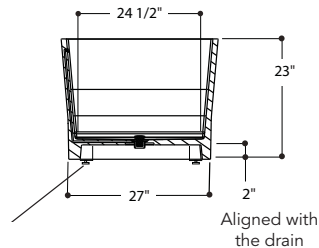
**WEIGHT** 249 lb without packaging

**INSTALLATION** Free-standing.  
Wall mounted faucet or faucet column  
(not included).

Levelers hidden under the base for easy adjustment.



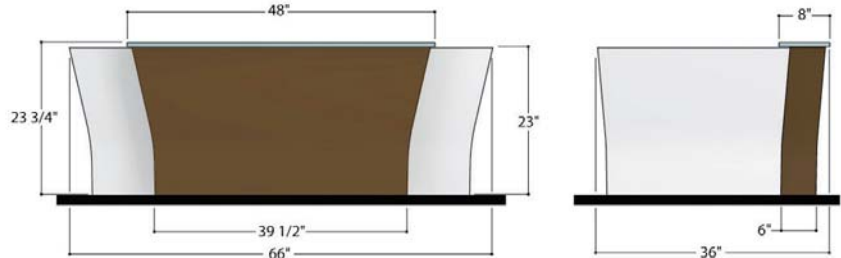
Levelers



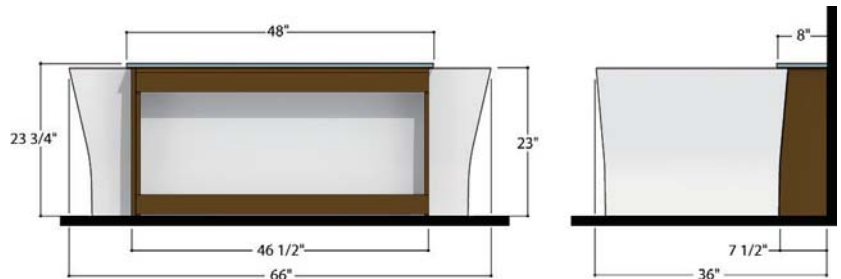
Aligned with the drain

## FAUCET MODULE FOR BOX BATHTUB

FREE-STANDING



AGAINST A WALL



## MULTI-PURPOSE STORAGE CABINET WITH BENCH OPTION

PRE-DRILLED FAUCET MODULE

WITHOUT FAUCET MODULE

